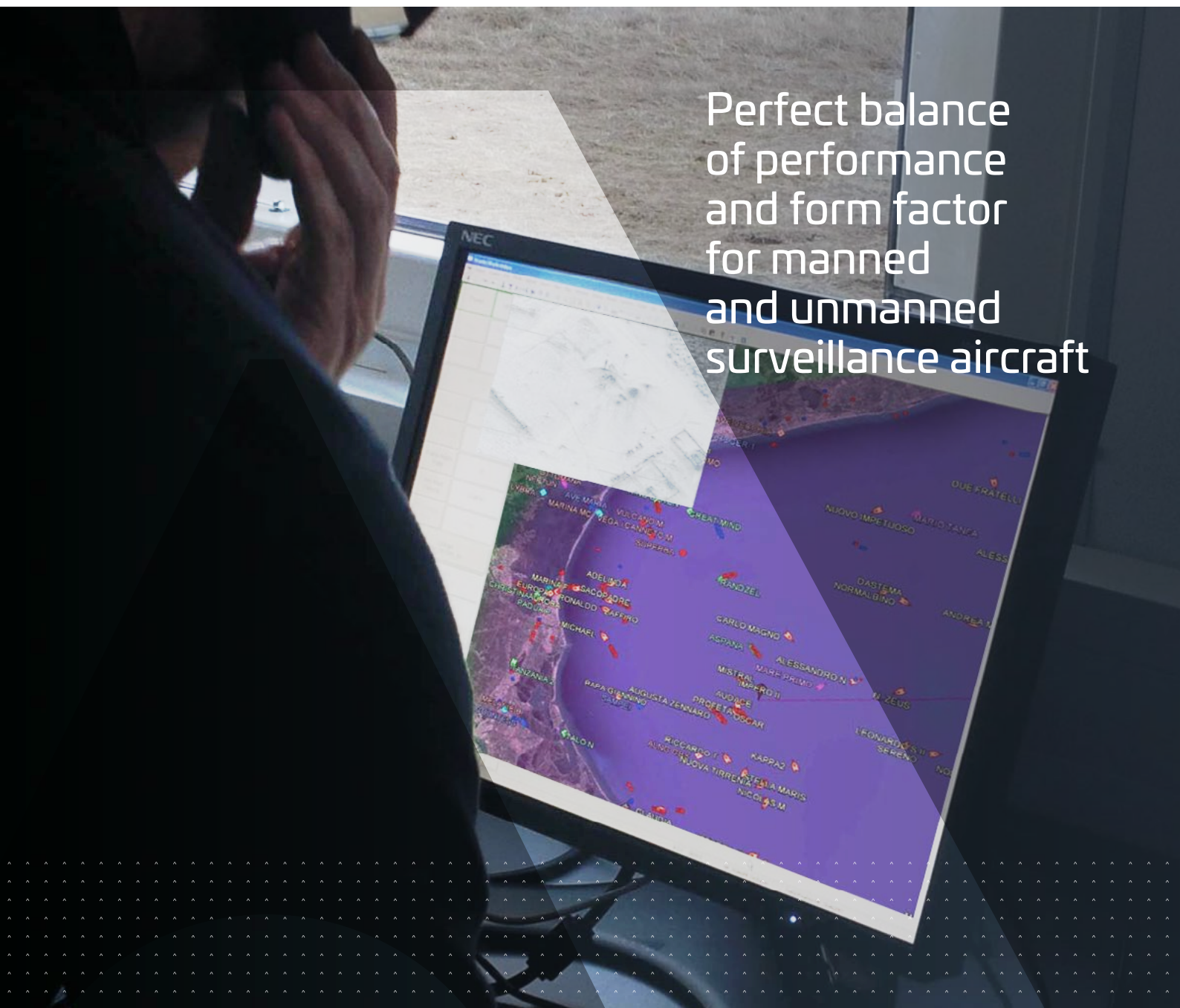


Airborne Surveillance Radar I-Master

Perfect balance
of performance
and form factor
for manned
and unmanned
surveillance aircraft



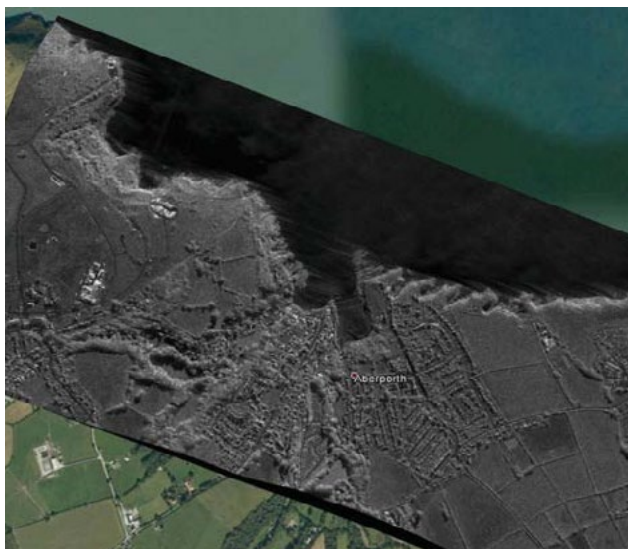
Airborne Surveillance Radar I-Master

The world's leading Lightweight Surveillance MTI/SAR Radar



Lightweight and versatile

I-Master is a compact lightweight, high performance radar. It provides world-leading Moving Target Indication [MTI] and Synthetic Aperture Radar [SAR] performance for surveillance, detection, and recognition of targets over large areas at long stand off ranges. I-Master provides high fidelity imagery for classification and positioning of various targets and can accurately detect and locate moving targets (from fast moving vehicles to individuals at walking pace) in all weather conditions during day and night. Weighing only 30kg, the design allows for easy installation on fixed wing or rotary wing, both manned and unmanned aircraft. I-Master is a 'plug & play' capability with the same footprint as a standard 15" EO/IR sensor turret. For a single sensor platform, it can easily replace, or on a multisensor platform is can compliment your sensor suite. I-Master greatly improves the effectiveness and efficiency of any surveillance scenario.



Multiple modes

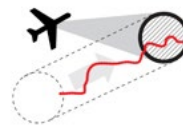
Movement



SPOTLIGHT MODE
Maintaining continued focus of movements over a specific area of interest



SECTOR SCANNING
Long range movement detection over a chosen sector

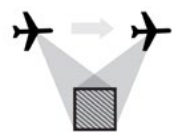


TRACKING
Focusing on a specified ground path, independent to the flight path of the aircraft

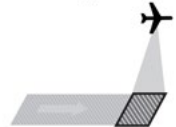


360 SCANNING
I-Master provides GMTI 360° for optimal wide area coverage

Imagery



SPOTLIGHT SAR MODE
High resolution ground imaging enables target classification



STRIPMAP SAR MODE
Enables wide area terrain mapping and target detection

Technical specification

Frequency	: Ku Band (12-18 GHz)
Weight	: 30kg
Range	Up to 35km in land modes Up to 100km in maritime modes
Dimensions	370mm (d) x 470mm (h)
Scan Coverage	360° azimuth rotation
Elevation Tilt	+10 degrees / -55 degrees
Electrical Power	28V DC @ 600W Max
Data	Ethernet
MTI Modes	360° Surveillance, Spotlight, Sector Scan and Tracker
MTI Performance	Detection and accurate location of fast and slow moving targets including foot traffic
SAR Modes	Strip Map and Spotlight
SAR Resolution	3m to <30cm
Change Detection	Amplitude & Coherent